

583282-1 ✓ ACTIVE

AMP | AMP MR

TE Internal #: 583282-1

Housing, Receptacle, Board-to-Board, 22 Position, .156 in [3.96 mm]

Centerline, 1 Row, Printed Circuit Board, Board Mount, AMP MR

[View on TE.com >](#)



Connectors > PCB Connectors > Board-to-Board Connectors > Board-to-Board Connector Housings



Connector & Housing Type: **Receptacle**

Connector System: **Board-to-Board**

Number of Positions: **22**

Centerline (Pitch): **3.96 mm [.156 in]**

Number of Rows: **1**

Features

Product Type Features

Connector & Housing Type	Receptacle
Connector System	Board-to-Board
Sealable	No
Connector & Contact Terminates To	Printed Circuit Board

Configuration Features

Number of Positions	22
Number of Rows	1

Contact Features

Contact Type	Socket
--------------	--------

Mechanical Attachment

Mating Alignment Type	Keyed
Mating Alignment	With
Connector Mounting Type	Board Mount

Housing Features

Housing Color	Black
Centerline (Pitch)	3.96 mm[.156 in]

Product Compliance

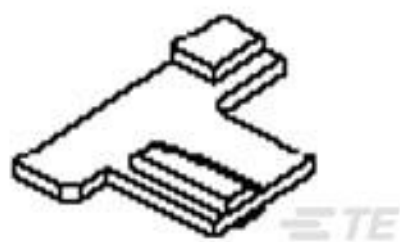
[For compliance documentation, visit the product page on TE.com>](#)

EU RoHS Directive 2011/65/EU	Compliant
EU ELV Directive 2000/53/EC	Compliant
China RoHS 2 Directive MIIT Order No 32, 2016	No Restricted Materials Above Threshold
EU REACH Regulation (EC) No. 1907/2006	Current ECHA Candidate List: JUNE 2022 (224) Candidate List Declared Against: JUNE 2022 (224) Does not contain REACH SVHC
Halogen Content	Not Low Halogen - contains Br or Cl > 900 ppm.
Solder Process Capability	Not applicable for solder process capability

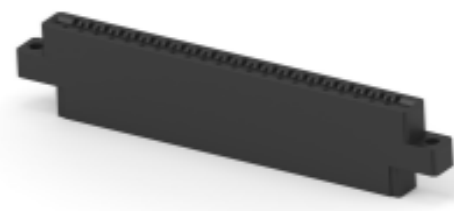
Product Compliance Disclaimer

This information is provided based on reasonable inquiry of our suppliers and represents our current actual knowledge based on the information they provided. This information is subject to change. The part numbers that TE has identified as EU RoHS compliant have a maximum concentration of 0.1% by weight in homogenous materials for lead, hexavalent chromium, mercury, PBB, PBDE, DBP, BBP, DEHP, DIBP, and 0.01% for cadmium, or qualify for an exemption to these limits as defined in the Annexes of Directive 2011/65/EU (RoHS2). Finished electrical and electronic equipment products will be CE marked as required by Directive 2011/65/EU. Components may not be CE marked. Additionally, the part numbers that TE has identified as EU ELV compliant have a maximum concentration of 0.1% by weight in homogenous materials for lead, hexavalent chromium, and mercury, and 0.01% for cadmium, or qualify for an exemption to these limits as defined in the Annexes of Directive 2000/53/EC (ELV). Regarding the REACH Regulation, the information TE provides on SVHC in articles for this part number is based on the latest European Chemicals Agency (ECHA) 'Guidance on requirements for substances in articles' posted at this URL: <https://echa.europa.eu/guidance-documents/guidance-on-reach>

Compatible Parts



TE Part # 583661-1
DUO TYNE FLAG KEYING PLUG

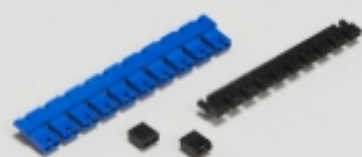


TE Part # 583282-2
HOUSING

Also in the Series | AMP MR



Board-to-Board Connector Housings(2)



Board-to-Board Jumpers & Shunts(4)



Insertion & Extraction Tools(1)



Power Cable Assemblies(1)



Rectangular Power Connectors(12)

Wire-to-Board Connector Assemblies
& Housings(4)

Documents

Product Drawings

[HSG MOD FORK 22 POS .156 CTRS](#)

English

CAD Files

[3D PDF](#)

3D

Customer View Model

[ENG_CVM_CVM_583282-1_Z.2d_dxf.zip](#)

English

Customer View Model

[ENG_CVM_CVM_583282-1_Z.3d_igs.zip](#)

English

Customer View Model

[ENG_CVM_CVM_583282-1_Z.3d_stp.zip](#)

English

By downloading the CAD file I accept and agree to the [Terms and Conditions](#) of use.

Instruction Sheets

[Instruction Sheet \(U.S.\)](#)

English

[AMP MODIFIED FORK CONNECTORS WITH CRIMP TYPE CONTACTS](#)

English

Agency Approvals

[Agency Approval Document](#)

English